



UNCOVERING TOMORROW'S RESOURCES TODAY:  
NORDIC EXPLORATION OF COPPER & CRITICAL METALS FOR THE GREEN TRANSITION

STO: ARCT

# IMPORTANT INFORMATION

THIS PRESENTATION (THE "PRESENTATION") HAS BEEN PRODUCED BY ARCTIC MINERALS AB (PUBL) (THE "COMPANY", AND TOGETHER WITH ITS DIRECT AND INDIRECT SUBSIDIARIES FROM TIME TO TIME, THE "GROUP"). THIS PRESENTATION IS FOR INFORMATION PURPOSES ONLY AND DOES NOT CONSTITUTE AN OFFER TO SELL OR A SOLICITATION OF AN OFFER TO BUY ANY OF THE COMPANY'S SHARES.

THIS PRESENTATION DOES NOT CONSTITUTE OR FORM PART OF, AND SHOULD NOT BE CONSTRUED AS, ANY OFFER, INVITATION, SOLICITATION OR RECOMMENDATION TO PURCHASE, SELL OR SUBSCRIBE FOR ANY SECURITIES IN ANY JURISDICTION AND THE PRESENTATION DOES NOT CONSTITUTE, AND SHOULD NOT BE CONSIDERED AS, A PROSPECTUS WITHIN THE MEANING OF THE EUROPEAN PROSPECTUS REGULATION (EU) 2017/1129 OF THE EUROPEAN PARLIAMENT AND OF THE COUNCIL OF 14 JUNE 2017 (THE "PROSPECTUS REGULATION") AND DOES NOT CONSTITUTE AN OFFER TO ACQUIRE SECURITIES IN THE COMPANY. THE PRESENTATION IS INTENDED TO PRESENT BACKGROUND INFORMATION ON THE COMPANY, ITS BUSINESS AND THE INDUSTRY IN WHICH IT OPERATES AND IS NOT INTENDED TO PROVIDE COMPLETE DISCLOSURE.

UNITED STATES: THIS PRESENTATION AND ANY MATERIALS DISTRIBUTED IN CONNECTION WITH THIS PRESENTATION ARE NOT DIRECTED TO, OR INTENDED FOR DISTRIBUTION TO OR USE BY, ANY PERSON OR ENTITY THAT IS A CITIZEN OR RESIDENT OR LOCATED IN ANY LOCALITY, STATE, COUNTRY OR OTHER JURISDICTION WHERE SUCH DISTRIBUTION, PUBLICATION, AVAILABILITY OR USE WOULD BE CONTRARY TO LAW OR REGULATION OR WHICH WOULD REQUIRE ANY REGISTRATION OR LICENSING WITHIN SUCH JURISDICTION. THIS PRESENTATION DOES NOT CONSTITUTE AN OFFER TO SELL, OR A SOLICITATION OF AN OFFER TO PURCHASE, ANY SECURITIES IN THE UNITED STATES. THIS PRESENTATION HAS NOT BEEN APPROVED OR REVIEWED BY ANY GOVERNMENTAL AUTHORITY OR STOCK EXCHANGE IN ANY JURISDICTION. THE SECURITIES IN THE COMPANY HAVE NOT BEEN, AND WILL NOT BE, REGISTERED UNDER THE UNITED STATES SECURITIES ACT OF 1933, AS AMENDED (THE "SECURITIES ACT"), OR UNDER ANY OF THE RELEVANT SECURITIES LAWS OF ANY STATE OR OTHER JURISDICTION OF THE UNITED STATES OF AMERICA, AND MAY NOT BE OFFERED OR SOLD IN OR INTO THE UNITED STATES, EXCEPT PURSUANT TO AN EXEMPTION FROM, OR IN A TRANSACTION NOT SUBJECT TO, THE REGISTRATION REQUIREMENTS OF THE SECURITIES ACT.

UNITED KINGDOM: THIS PRESENTATION IS FOR INFORMATION PURPOSES ONLY AND DOES NOT CONSTITUTE AN OFFERING DOCUMENT OR AN OFFER OF SECURITIES TO THE PUBLIC IN THE UNITED KINGDOM TO WHICH SECTION 85 OF THE FINANCIAL SERVICES AND MARKETS ACT 2000 OF THE UNITED KINGDOM (AS AMENDED BY THE FINANCIAL SERVICES ACT 2012 OF THE UNITED KINGDOM) APPLIES. IT IS NOT INTENDED TO PROVIDE THE BASES FOR ANY EVALUATION OF ANY SECURITIES AND SHOULD NOT BE CONSIDERED AS A RECOMMENDATION THAT ANY PERSON SHOULD SUBSCRIBE FOR OR PURCHASE ANY SECURITIES. IN THE UNITED KINGDOM, THIS PRESENTATION IS BEING MADE, AND IS DIRECTED ONLY, TO PERSONS WHO ARE BOTH: (I) QUALIFIED INVESTORS; AND EITHER (II) PERSONS FALLING WITHIN THE DEFINITION OF INVESTMENT PROFESSIONALS (CONTAINED IN ARTICLE 19(5) OF THE FINANCIAL SERVICES AND MARKETS ACT 2000 (FINANCIAL PROMOTION) ORDER 2005, AS AMENDED (THE "ORDER")), OR OTHER PERSONS TO WHOM IT MAY LAWFULLY BE COMMUNICATED IN ACCORDANCE WITH THE ORDER; OR (III) HIGH NET WORTH BODIES CORPORATE, UNINCORPORATED ASSOCIATIONS AND PARTNERSHIPS AND THE TRUSTEES OF HIGH VALUE TRUSTS, AS DESCRIBED IN ARTICLE 49(2)(A) TO (D) OF THE ORDER.

THE INFORMATION SHOULD BE INDEPENDENTLY EVALUATED AND ANY PERSON CONSIDERING AN INTEREST IN THE COMPANY IS ADVISED TO OBTAIN INDEPENDENT ADVICE AS TO THE LEGAL, TAX, ACCOUNTING, FINANCIAL, CREDIT AND OTHER RELATED ADVICE PRIOR TO PROCEEDING WITH ANY INTEREST. PROSPECTIVE INVESTORS SHOULD NOT TREAT THE CONTENTS OF THE PRESENTATION AS AN ADVICE RELATING TO LEGAL, TAXATION OR INVESTMENT MATTERS.

CERTAIN INFORMATION CONTAINED HEREIN HAS BEEN OBTAINED FROM PUBLISHED SOURCES PREPARED BY OTHER PARTIES THAT THE COMPANY HAS DEEMED TO BE RELEVANT AND TRUSTWORTHY. NO REPRESENTATION OR WARRANTY, EXPRESS OR IMPLIED, IS MADE BY THE COMPANY AS TO THE ACCURACY, COMPLETENESS OR VERIFICATION OF ANY INFORMATION CONTAINED IN THE PRESENTATION. THE COMPANY HAS NOT MADE ANY INDEPENDENT REVIEW OF INFORMATION BASED ON PUBLIC STATISTICS OR INFORMATION FROM AN INDEPENDENT THIRD PARTY REGARDING THE MARKET INFORMATION THAT HAS BEEN PROVIDED BY SUCH THIRD PARTY, THE INDUSTRY OR GENERAL PUBLICATIONS.

STATEMENTS IN THE PRESENTATION, INCLUDING THOSE REGARDING THE POSSIBLE OR ASSUMED FUTURE OR OTHER PERFORMANCE OF THE COMPANY OR ITS INDUSTRY OR OTHER TREND PROJECTIONS, CONSTITUTE FORWARD-LOOKING STATEMENTS. BY THEIR NATURE, FORWARD-LOOKING STATEMENTS INVOLVE KNOWN AND UNKNOWN RISKS, UNCERTAINTIES, ASSUMPTIONS AND OTHER FACTORS AS THEY RELATE TO EVENTS AND DEPEND ON CIRCUMSTANCES THAT WILL OR MAY OCCUR IN THE FUTURE, WHETHER OR NOT OUTSIDE THE CONTROL OF THE COMPANY. NO ASSURANCE IS GIVEN THAT SUCH FORWARD-LOOKING STATEMENTS WILL PROVE TO BE CORRECT. PROSPECTIVE INVESTORS SHOULD NOT PLACE UNDUE RELIANCE ON FORWARD-LOOKING STATEMENTS.

EXCEPT AS EXPLICITLY STATED HEREIN, NO INFORMATION IN THIS PRESENTATION HAS BEEN AUDITED OR REVIEWED BY THE COMPANY'S AUDITORS. CERTAIN FINANCIAL AND OTHER INFORMATION PRESENTED IN THIS PRESENTATION HAVE BEEN SUBJECT TO ROUNDING ADJUSTMENTS FOR THE PURPOSE OF MAKING THIS PRESENTATION MORE EASILY ACCESSIBLE FOR THE READER. AS A RESULT, THE FIGURES IN TABLES MAY NOT SUM UP TO THE STATED TOTALS.

THIS PRESENTATION AS WELL AS ANY OTHER INFORMATION PROVIDED BY OR ON BEHALF OF THE COMPANY IN CONNECTION HERewith SHALL BE GOVERNED BY SWEDISH LAW, AND ANY DISPUTE ARISING IN RESPECT OF THIS PRESENTATION IS SUBJECT TO THE EXCLUSIVE JURISDICTION OF THE CITY COURT OF STOCKHOLM (STOCKHOLMS TINGSRÄTT) AS THE COURT OF FIRST INSTANCE

# EXECUTIVE SUMMARY

## Strategic Acquisition

Arctic Minerals has acquired private company, Rare Earth Energy Metals Pty Ltd (REEM) in an all-scrip transaction

## Exceptional Project Portfolio

Addition of two highly prospective copper projects (one with historical resources of >25Mt of copper-silver ore) in Sweden, complimenting the 3.3Mt Bidjovagge copper-gold project in Norway and copper projects in Finland

## First Class Team

Experienced Board, Management & Advisory Committee with demonstrated track record of creating shareholder value within the mining sector. Exploration & mining expertise in the Nordics.

## Strong Commodities Outlook

Global push towards clean energy, coupled with protectionist moves by countries looking to secure vital materials, is driving an unprecedented surge in copper demand. Nordics & Europe are leading the way in the Green Transition, focusing efforts on internal supply of critical metals, including copper

## Immediate Opportunities to Increase Market Value

Significant potential for resource growth & new discoveries to increase market value

### Proposed Board & Management



**PETER WALKER**  
Chairman  
Over 40 years of international experience in the resources sector, Founder and CEO of Scandinavian Minerals



**KRISTER SÖDERHOLM**  
Deputy Chairman  
Geologist with more than 40 years of experience in mining and exploration in the Nordic region and internationally



**CLAES LEVIN**  
Director  
Long-term chairman, executive and director in the Swedish enterprise, with CEO and management positions in several listed companies



**ROBERT BEHETS**  
Director  
Over 35 years of international experience in the resources sector, instrumental in the growth of Mantra Resources and Papillon Resources



**PETER GEORGE**  
Director  
30 years of experience in the resources sector including technical and managerial roles in Boliden and MD/Executive Director of Alicanto Minerals



**RISTO PIETILÄ**  
CEO  
Exploration geophysicist with +30 years of experience in Finland and internationally. Discovery track record, including Silver Swan (Australia), Telkkälä (Finland)

### Advisory Committee



**ERIK LUNDSTAM**  
Advisor  
30 years of experience in various geological settings, with significant discoveries in Sweden with many years of experience across Boliden and Alicanto Minerals



**LARS-ERIC AARO**  
Advisor  
Over 35 years in the mining industry with executive roles at major companies like LKAB and Boliden, and an industry advisor in sustainable mining strategies



**DISCAN LARGE**  
Advisor  
Geologist with more than 40 years of experience in mining and exploration globally. Former exploration Manager Eurasian Minerals

# A FORCE IN SCANDINAVIAN EXPLORATION & DEVELOPMENT

## Balanced portfolio with exceptional mineral potential



Existing resources & drill-ready targets

Hennes Bay (Cu, Ag), Sweden:  
Exciting new copper district, with associated critical metals.

Historical resource.

<5% of prospective contact drill tested.

Bidjovagge (Cu, Au), Norway:  
Indicated Mineral Resource.

Bonanza grades of gold & copper.

High-grade cobalt & tellurium.

Multiple drill-ready targets.

Swan Lake (Cu, Au), Sweden:

Drill-ready with identified targets for epithermal gold-silver & porphyry copper-gold deposits.

Kuusi (Cu- Au- PGE), Finland:

Strong coincident geophysical / geochemical anomaly.

Drill-ready target.



Scale & grade potential. Robust pipeline

Large Scale Deposit Types  
Sediment-hosted copper at Hennes Bay.

Porphyry copper-gold at Swan Lake.

Bonanza Grades

Bonanza grades of gold and high grades of copper in relatively shallow exploration drill holes at Bidjovagge.

Greenfield Exploration

Earlier stage exploration targets at Tavast, Swan Lake & Kuusi provide robust pipeline and promise exciting new opportunities.



Demonstrated track-record of creating shareholder value

Highly Experienced Board

Successful multi-disciplinary team with significant experience in Scandinavia.

Demonstrated track record of creating shareholder value within the mining sector e.g. Scandinavian Minerals, Mantra Resources, Papillon Resources.

Proposed additions to Board and established Advisory Committee bring substantial international experience in geology, mining, corporate & finance.



Advantageous market conditions & political landscape

New Supercycle emerging in the copper market, built on several rising geopolitical and market trends.

Global push towards clean electrical energy, coupled with protectionist moves by countries looking to secure vital materials, is driving an unprecedented surge in copper demand.

Scandinavia & Europe leading the way in the Green Transition.

Scandinavian exploration and mining projects are in an increasingly supportive environment.

EU Critical Raw Materials Act (CRMA) established a framework to ensure a secure & sustainable supply of critical raw materials.

# PROJECT PORTFOLIO IN BRIEF - SWEDEN

## Hennes Bay Project - Quick Facts

### PEDIGREE COMPARISONS:

Located in a largely unexplored part of the Grenville Orogeny, the same system that gave rise to world class sediment-hosted copper deposits: Kamo-a-Kakula & Tenke-Fungurumi (Congo), Legnica-Glawe Copper Belt (Poland) & Udokan (Russia)

### POISED FOR GROWTH:

Granted exploration permits covering 322 km<sup>2</sup>

Historical drilling defined over 25 Mt of Cu-Ag historical resource (~0.9% Cu & ~28g/t Ag)

No modern exploration for over 40 years  
<5% of prospective contact drill tested

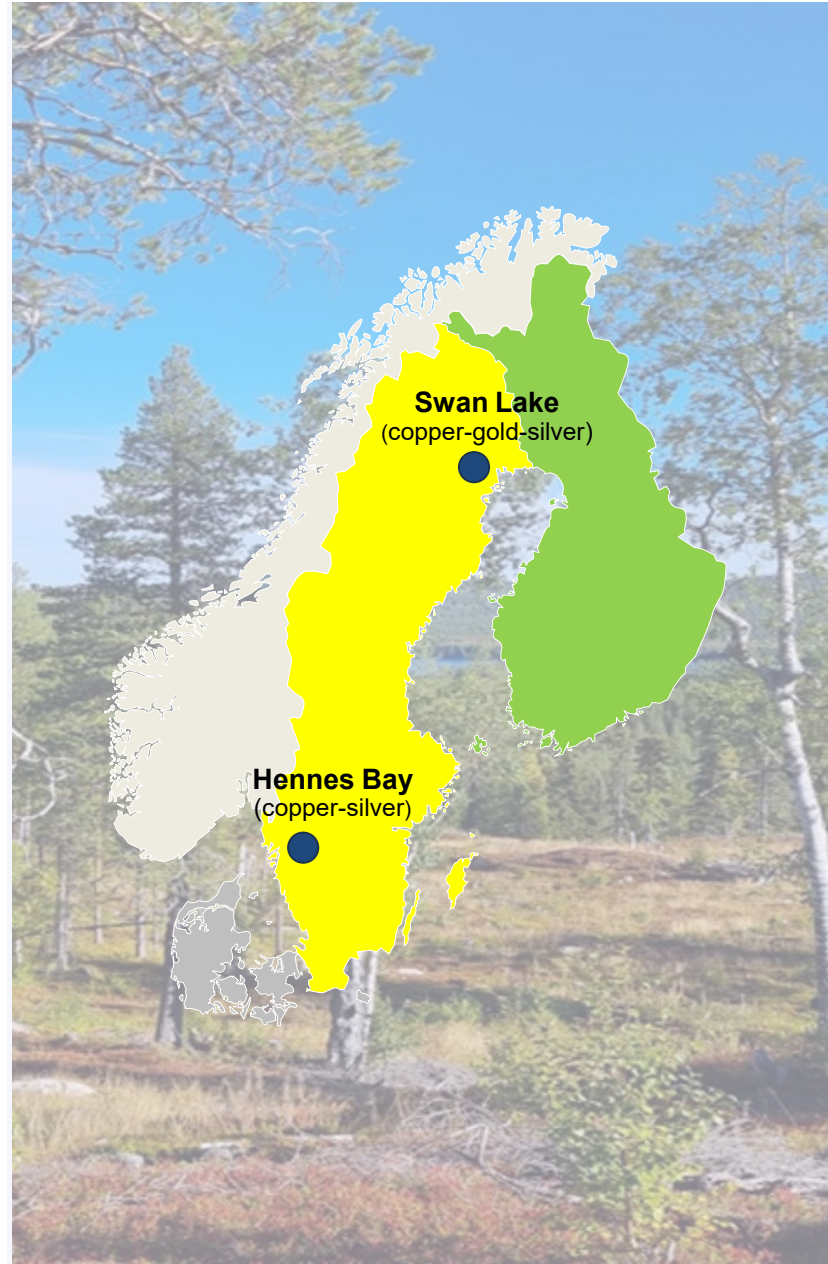
Recent fieldwork and geophysical testing has highlighted the potential for significant resource growth & new discoveries

### RECENT SUCCESS:

Recent tests confirmed earlier findings, showing similar grades of Cu & Ag, with the added benefits of other critical metals

### NEW DISCOVERIES:

Recent analysis of drill core has identified the presence of other critical metals such as gallium, germanium & vanadium



## Swan Lake Project - Quick Facts

### NEW DISCOVERY IN WELL-ENDOWED AREA:

Swan Lake is a new Cu-Ag-Au system located within an epithermal altered lithocap, with Au-Ag potential & porphyry Cu-Au potential

Granted exploration permits covering 218 km<sup>2</sup>

Project sits along strike and between two of the largest Cu-Au projects in Europe

### RESOURCES ALONG STRIKE:

Aitik mine - 2.2Bt @ 0.19% Cu, 0.12g/t Au, & 1.0g/t Ag

Laver project - 1.0Bt @ 0.21% Cu, 0.11g/t Au & 3.0g/t Ag

### DRILL- READY:

Drill-ready with identified targets for epithermal Au-Ag & porphyry Cu-Au deposits

### MINERALISED SAMPLES:

Rock chip samples with up to 0.7% Cu, 0.16g/t Au, & 55g/t Ag

# PROJECT PORTFOLIO IN BRIEF – NORWAY AND FINLAND

## Bidjovagge Project - Quick Facts

### PEDIGREE COMPARISONS:

Geological parallels between the Bidjovagge area & the Kalgoorlie “Golden Mile” area

### RESOURCE ESTIMATE:

Past producing copper-gold mine

Resource of 3.3Mt @ 0.97% Cu & 127 g/t Au (Indicated category)

Potential for high-grade cobalt & tellurium has also been identified. Only recently discovered and not included in the resource estimate

### HIGH- GRADE INTERSECTIONS:

18.0m @ 2.21% Cu & 33.8g/t Au

27.3m @ 3.11% Cu & 0.58 g/t Au

15.0m @ 2.0% Cu & 8.55g/t Au

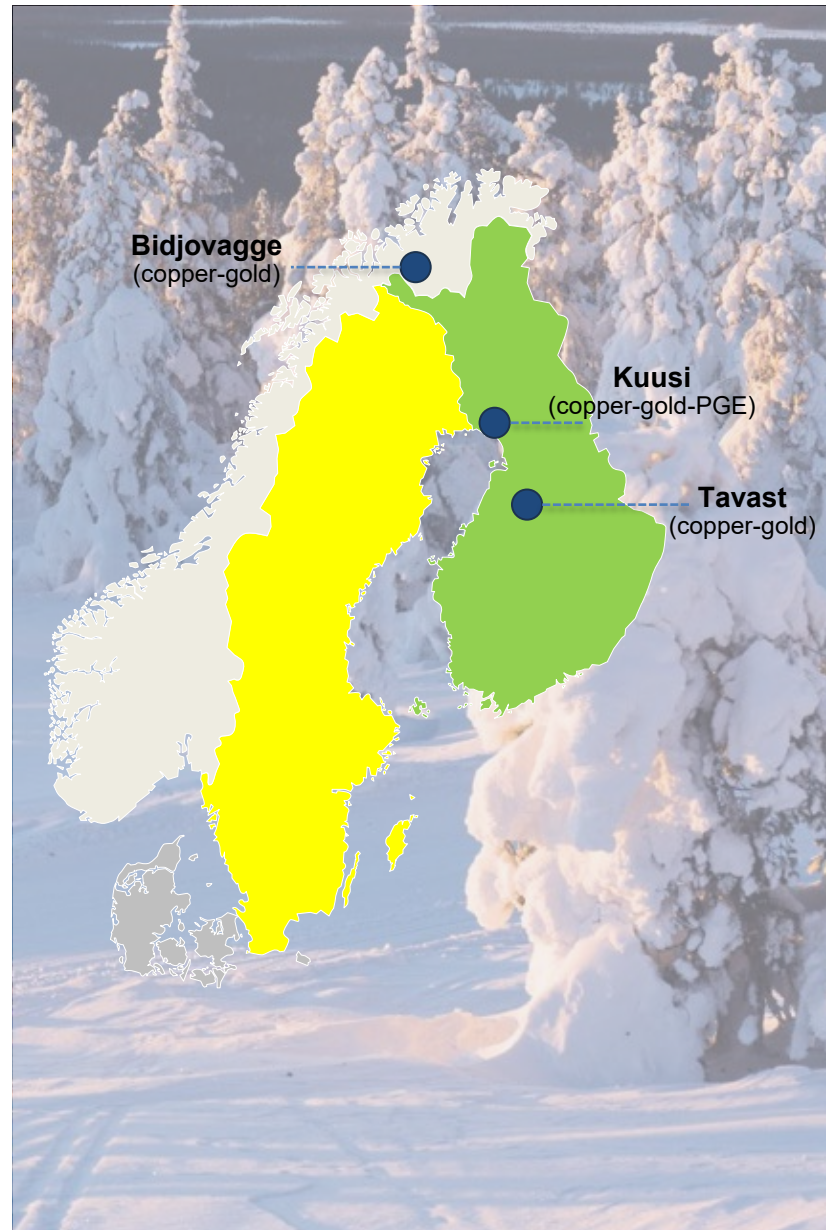
### DRILL- READY TARGETS:

Significant resource growth potential

Bonanza grades of gold & high grades of copper in relatively shallow exploration drill holes

Recent analysis of geophysical data indicates continuation of the ore zone in several directions

Multiple drill-ready targets



## Kuusi Project - Quick Facts

### DRILL READY TARGET:

Kuusi is a drill-ready copper-gold-PGE target analogous to the Kilvenjarvi deposit on the same geological basement structure

Granted exploration permit covering 3km<sup>2</sup>

### STRONG COINCIDENT ANOMALY:

Strong geophysical anomaly coincident with geochemical anomaly

Till geochemical anomaly: Cu up to 153 ppm compared to background level of 79 ppm

Initial drilling program designed

## Tavast Project - Quick Facts

### LARGE- SCALE DISCOVERY POTENTIAL:

Tavast is a greenfield copper-gold system located in a previously unexplored & sparsely populated region of central Finland

Exploration Reservation covering 444km<sup>2</sup>

Substantial potential for a large-scale discovery

### HIGH- GRADE BOULDER SAMPLES:

Boulders assay up to 4.4% Cu & up to 0.56g/t Au

Boulders' source interpreted as 'local'

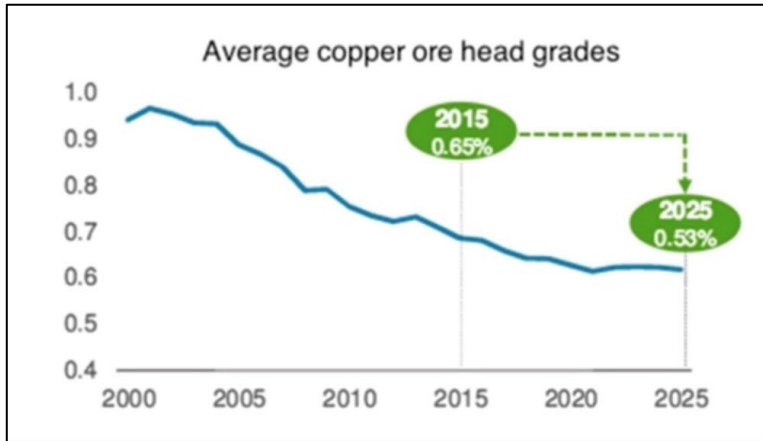
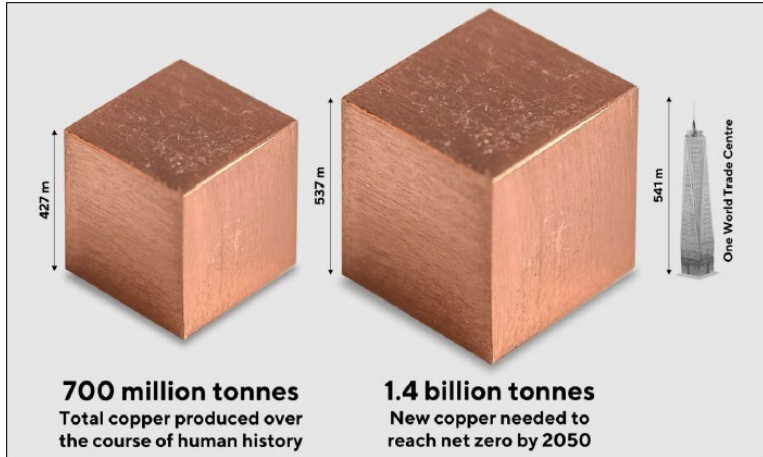
### EXPLORATION PLANS:

Program of ground geophysics, trenching and Base-of-Till / Top-of-Bedrock sampling planned

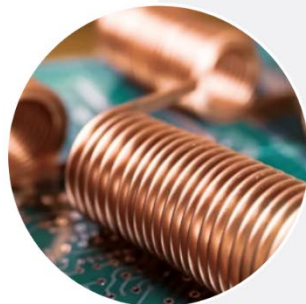
# COPPER – THE MACRO LANDSCAPE

## 300 new major copper mines required by 2050

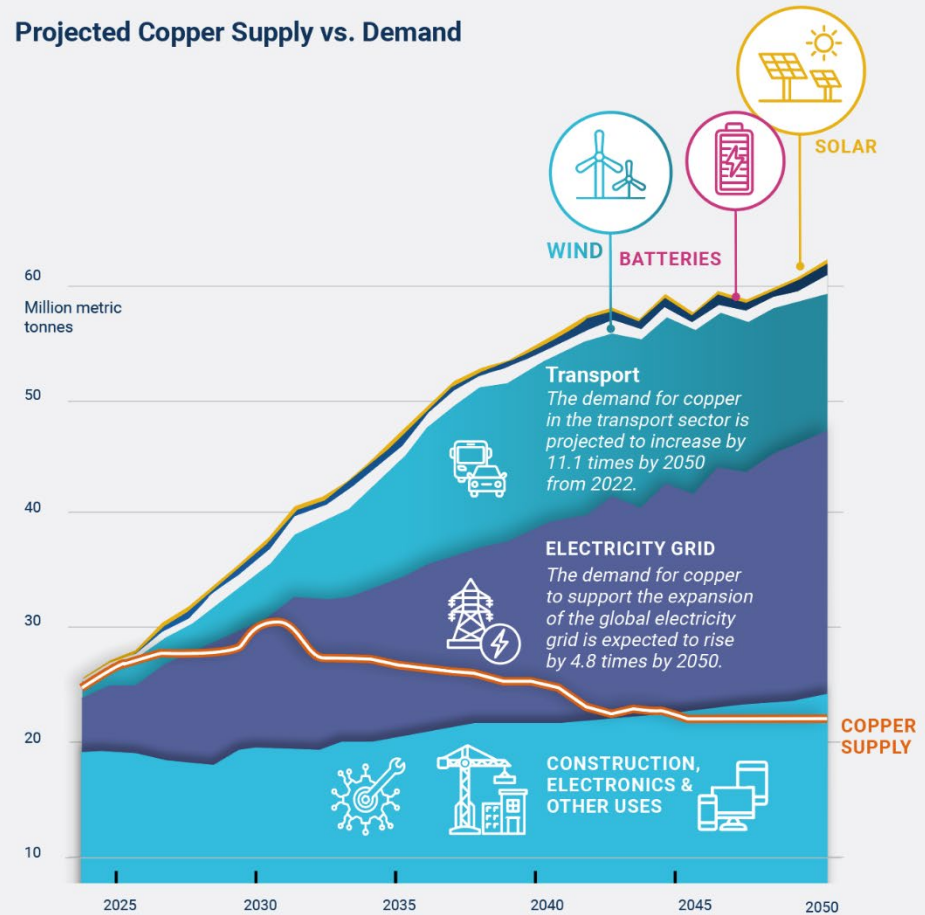
With drastically falling grades and older mines coming to the end of their lives - 300 new major copper mines, producing nearly twice the amount of copper mined in human history, are required over the next 27 years to achieve net zero by 2050<sup>1,2,3,4</sup>



1. Source: <https://energyminute.ca/infographics/the-volume-of-2050-net-zero-copper-demand/>  
 2. Source: modified from "The Future of Copper", S&P Global Report, July 2022  
 3. Source: <https://www.energyandcapital.com/copper-investing-2016/>  
 4. Source: <https://sprottets.com/>



### Projected Copper Supply vs. Demand



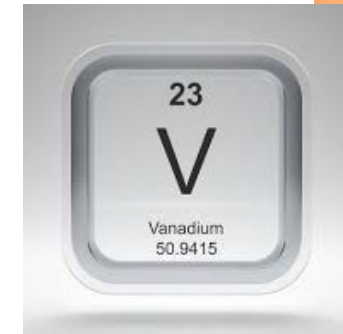
Source: <https://sprottets.com/>

# CRITICAL AND STRATEGIC METALS

*The world has changed – Europe is looking to the Nordics to take the lead in critical metal supply*

## Copper

- Copper is vital to everything that involves the transmission of electricity.
- Copper grades have decreased by 50% over the last 30 years and many are suggesting that Peak Copper will be reached this decade (if not already). Add the Green Transition to this equation, the pressure on the copper supply & price will be immense.
- Europe imports more than 40% of the copper that it uses, security of supply has never been so precarious.
- Arctic Minerals already has proven resources of over 28Mt of Copper ore, with indications at surface that there is a lot more to be uncovered.



## Gallium, Germanium, Vanadium & Rare Earth Elements

- Arctic Minerals' geologists have discovered these valuable Critical Metals which could be mined as byproducts to copper at its Hennes Bay project.
- Currently assessing potential options to process these metals in a cost-effective way that could reduce, or even eliminate, the reliance upon external sources to the European market.



## Permitting

- Resources industry has suffered for many years from a drawn-out permitting process.
- Governments in the Nordics have recognised this – reviews underway to speed up the permitting process.
- EU CRMA aims to prioritise strategic projects & provide streamlined and predictable permitting procedures.

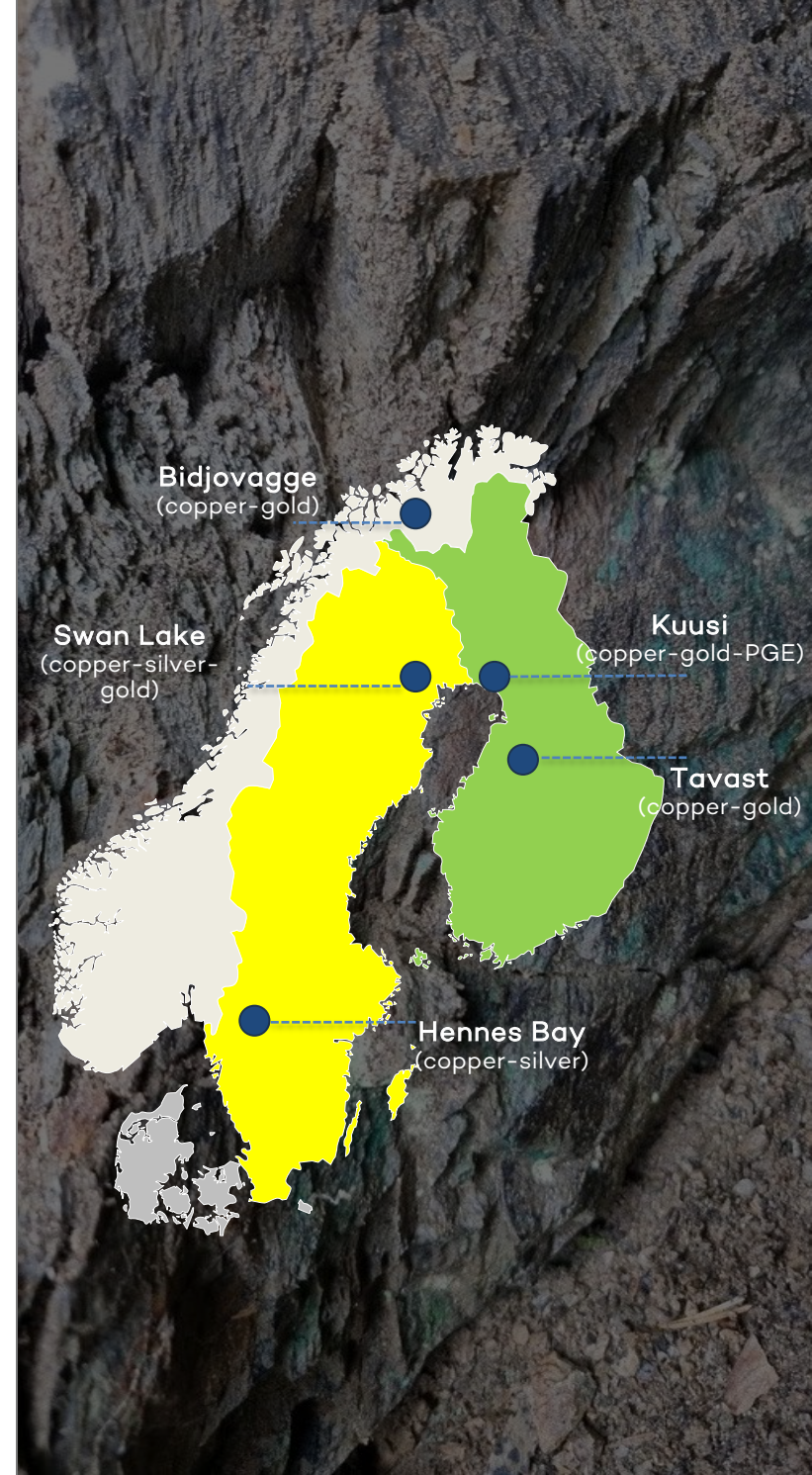
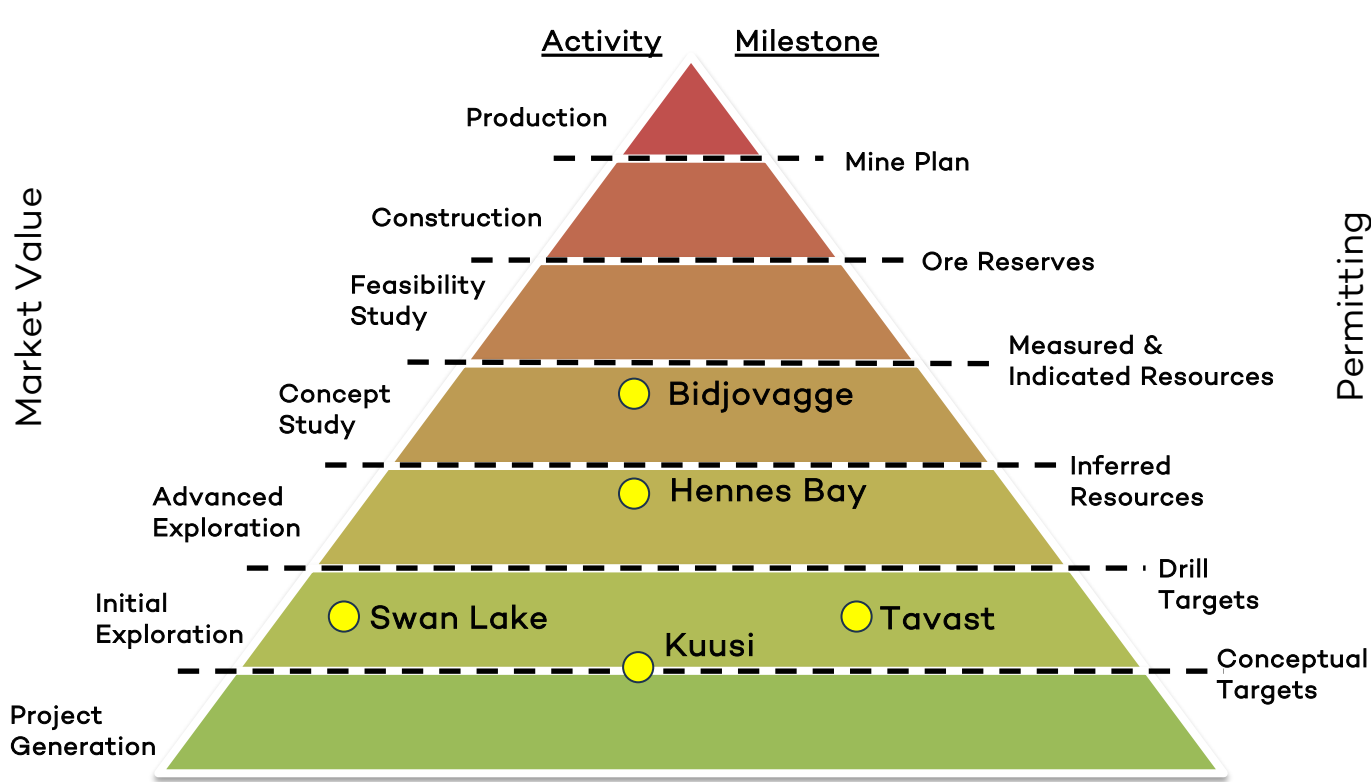
## 2030 Benchmarks for EU Strategic Raw Materials





# BALANCED PORTFOLIO

*Geared towards drilling success and rapid project advancement*





[www.arcticminerals.se](http://www.arcticminerals.se)

For further information contact:

Peter Walker, Chairman, [peter.walker@arcticminerals.se](mailto:peter.walker@arcticminerals.se) or

Peter George, Director elect, [peter.george@arcticminerals.se](mailto:peter.george@arcticminerals.se)