



UNCOVERING TOMORROW'S RESOURCES TODAY:

MAIDEN RESOURCE FOR HENNES BAY TOTALS 447,000T OF CONTAINED COPPER AND 37Moz OF SILVER

STO: ARCT



APRIL 2025

IMPORTANT INFORMATION

The information comprised in this document (the “**Presentation**”) has been prepared by the Board of Directors of Arctic Minerals AB (publ) (“**Arctic Minerals**” or the “**Company**”) solely for the purpose of providing information regarding the offer of securities in the Company (the “**Offer**”). The Presentation is strictly confidential and may not be disclosed to any third party or referred to publicly without the prior written consent of the Company. The figures included in this Presentation have, in certain cases, been rounded off and, consequently, the tables contained in this material do not necessarily add up.

The Offer of securities is intended for specific investors. The Offer is not directed to any person whose participation would require additional information, prospectuses, registrations or measures other than those prescribed by Swedish law. The Offer is not being made to any individuals residing in the United States of America, Australia, Canada, New Zealand, Hong Kong, Japan, Singapore, Switzerland or South Africa or any other jurisdiction that require additional information, prospectuses, registrations or measures other than those prescribed by Swedish law. The Offer has not been and will not be registered under the U.S. Securities Act of 1933 as amended (the “**Securities Act**”), or under any U.S. state securities law. Persons into whose possession this Presentation reaches, are required by the Company to inform themselves of and to observe, such restrictions. The Company does not accept legal responsibility for any violation by any person, whether or not a prospective investor, of any such restrictions.

The Presentation contains certain forward-looking statements. Such forward-looking statements reflect the current views and opinions of the Board of Directors of the Company or are assumptions based on third party information available to the Company. Such forward-looking statements are subject to certain known and unknown risks, uncertainties associated with the Company’s growth, management, relations with clients and suppliers and other factors referenced in this Presentation. Although the Company believes that these assumptions were reasonable when made, these assumptions are inherently subject to significant known and unknown risks, uncertainties, contingencies and other important factors, which are difficult or impossible to predict and are beyond the Company’s control. Such risks, uncertainties, contingencies and other important factors could cause actual events to differ materially from the expectations expressed or implied in this Presentation by such forward-looking statements. The information, opinions and forward-looking statements contained in this Presentation speak only as at its date and are subject to change without notice. The Board of Directors confirms that statements, estimates and projections set out herein with respect to the anticipated future results, performance or achievements of the Company reflect various assumptions, which may or may not prove to be correct. There can be no assurance that such views are accurate, or that such estimates and projections will be realised. No representations, warranties or other assurances can, therefore, be made as to the accuracy of such statements, estimates or projections.

In making an investment decision, each investor must rely on their own examination, analysis and enquiry of the Company and the terms of the Offer, including the merits and risks involved and accept the risks associated with the fact that only certain limited and high-level due diligences have been carried out. The Company has not authorised anyone to provide any information or give any statements other than those provided in the Presentation. Delivery of the Presentation shall not, under any circumstances indicate that the information presented in the Presentation is correct on any day other than the date of the Presentation, or that there would not be any changes in the business of the Company after the date of the Presentation.

While this Presentation has been prepared in good faith, no representation or warranty, express or implied, is made and no responsibility is or will be accepted by the Company or by its officers or employees as to the accuracy or completeness of the information in the Presentation. The Company shall not have any liability whatsoever arising directly or indirectly from the use of this Presentation and to the extent an investment is made.

EXECUTIVE SUMMARY

Exceptional Project Portfolio

Balanced portfolio with exceptional mineral potential. Two advanced stage projects including 55.4Mt copper-silver resource in Sweden & 3.3Mt copper-gold resource in Norway. Additional copper-gold & copper-PGE exploration projects in the Nordics

First Class Team

Experienced Board, Management & Advisory Committee with demonstrated track record of creating shareholder value within the mining sector. Exploration & mining expertise in Scandinavia

Strong Commodities Outlook

Global push towards clean energy, coupled with protectionist moves by countries looking to secure vital materials, is driving an unprecedented surge in copper demand. Nordic's & Europe are leading the way in the Green Transition, focusing efforts on internal supply of critical metals, including copper

Immediate Opportunities to Increase Market Value

Significant potential for resource growth & new discoveries to increase market value

Board & Management		Advisory Committee	
 <p>PETER WALKER Non-Executive Chairman Over 40 years of international experience in the resources sector, Founder and CEO of Scandinavian Minerals</p>	 <p>KRISTER SÖDERHOLM Vice Chairman Geologist with more than 40 years of experience in mining and exploration in the Nordic region and internationally</p>	 <p>ERIK LUNDSTAM Advisor 30 years of experience in various geological settings, with significant discoveries in Sweden with many years of experience across Boliden and Aicanto Minerals</p>	 <p>LARS-ERIC AARO Advisor Over 35 years in the mining industry with executive roles at major companies like LKAB and Boliden, and an industry advisor in sustainable mining strategies</p>
 <p>PETER GEORGE Executive Director 30 years of experience in the resources sector including technical and managerial roles in Boliden and MD/Executive Director of Aicanto Minerals</p>	 <p>CLAES LEVIN Non-Executive Director Over 40 years of international experience, Jur. kand. and holds an economics degree from Lund University.</p>	 <p>DUNCAN LARGE Advisor Geologist with more than 40 years of experience in mining and exploration globally. Former exploration Manager Eurasian Minerals</p>	 <p>JONAS LINDHOLM Advisor Business Facilitator with over 20 years of experience in creating new. Former Swedish Trade Commissioner responsible for Australian and NZ</p>
 <p>ROBERT BEHETS Non-Executive Director Over 35 years of international experience in the resources sector, instrumental in the growth of Mantra Resources and Papillon Resources</p>	 <p>RISTO PIETILÄ CEO Exploration geophysicist with +30 years of experience in Finland and internationally. Discovery track record, Ind. Silver Swan (Australia), Telkkää (Finland)</p>		

A FORCE IN SCANDINAVIAN EXPLORATION & DEVELOPMENT

Balanced portfolio with exceptional mineral potential



Existing resources & drill-ready targets

Hennes Bay (Cu, Ag), Sweden:

Exciting new copper district, with associated critical metals.

Maiden JORC Compliant Inferred Resource - March 2025.

<5% of prospective contact drill tested

Bidjovagge (Cu, Au), Norway:

Indicated Mineral Resource.

Bonanza grades of gold & copper.

High-grade cobalt & tellurium.

Multiple drill-ready targets.

Swan Lake (Cu, Au), Sweden:

Drill-ready with identified targets for epithermal gold-silver & porphyry copper-gold deposits.

Kuusi (Cu-Au-PGE), Finland:

Strong coincident geophysical / geochemical anomaly.

Drill-ready target.



Scale & grade potential. Robust pipeline

Large Scale Deposit Types

Sediment-hosted copper at Hennes Bay.

Porphyry copper-gold at Swan Lake.

Bonanza Grades

Bonanza grades of gold and high grades of copper in relatively shallow exploration drill holes at Bidjovagge.

Greenfield Exploration

Earlier stage exploration targets at Tavast, Swan Lake & Kuusi provide robust pipeline and promise exciting new opportunities.



Demonstrated track-record of creating shareholder value

Highly Experienced Board

Successful multi-disciplinary team with significant experience in the Nordics.

Demonstrated track record of creating shareholder value within the mining sector e.g. Scandinavian Minerals, Mantra Resources, Papillon Resources.

Recent additions to Board & establishment of Advisory Committee bring substantial international experience in geology, mining, corporate & finance.



Advantageous market conditions & political landscape

New Supercycle emerging in the copper, precious metals and critical metals markets, built on several rising geopolitical and market trends.

Global push towards clean electrical energy, coupled with protectionist moves by countries looking to secure vital materials, is driving an unprecedented surge in copper demand.

Nordic's & Europe leading the way in the Green Transition.

Nordic exploration and mining projects are in an increasingly supportive environment.

EU Critical Raw Materials Act (CRMA) established a framework to ensure a secure & sustainable supply of critical raw materials.

PROJECT PORTFOLIO IN BRIEF - SWEDEN

Hennes Bay Project - Quick Facts

PEDIGREE COMPARISONS:

Located in a largely unexplored part of the Grenville Orogeny, the same system that gave rise to world class sediment-hosted copper deposits: Kamo-a-Kakula & Tenke-Fungurumi (Congo), Legnica-Glacow Copper Belt (Poland) & Udokan (Russia)

POISED FOR GROWTH:

Granted exploration permits covering 322 km², with further 80km² under application

JORC Compliant Resource of 55.4Mt @ 1.0% CuEq (0.8% Cu & 20.8 g/t Ag)

No modern exploration for over 40 years

<5% of prospective contact drill tested

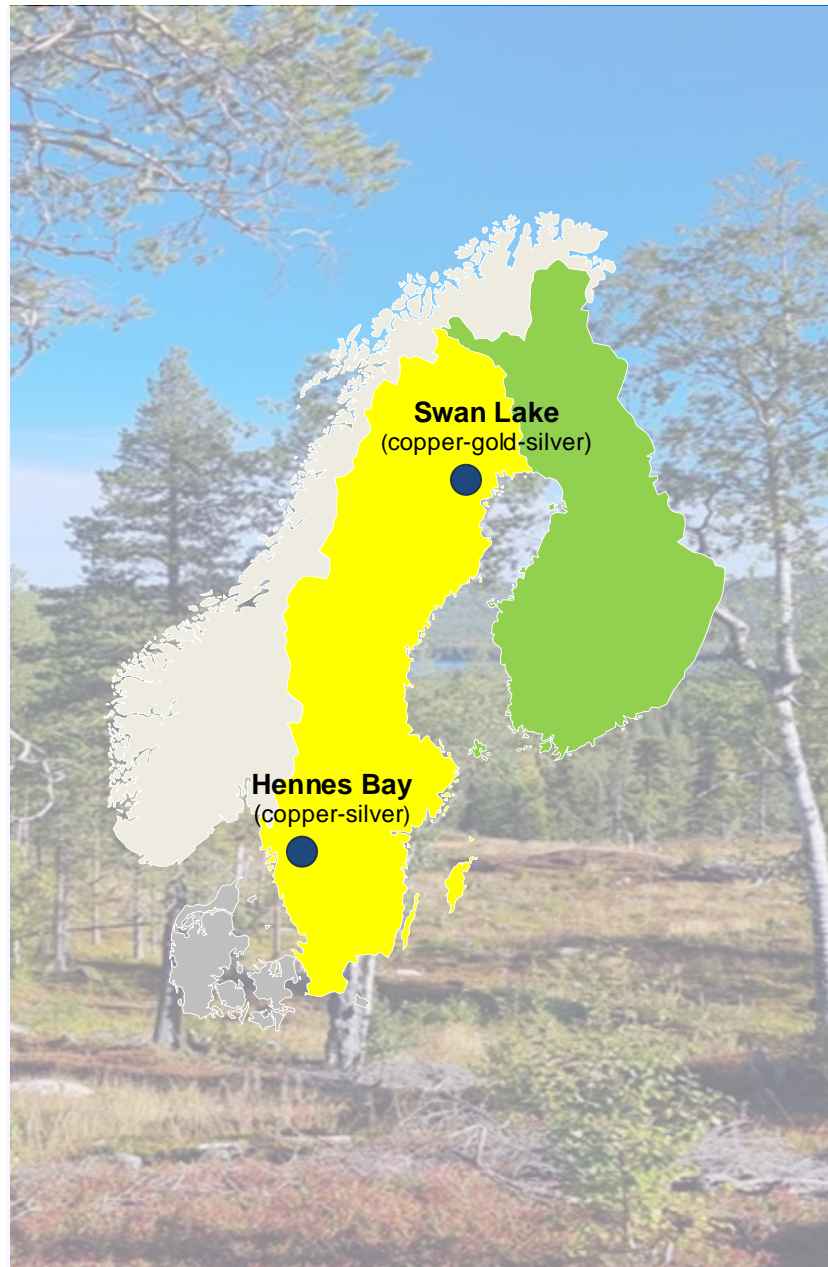
Recent investigations has highlighted the potential for significant resource growth & new discoveries

RECENT SUCCESS:

Recent tests confirmed earlier findings, showing similar grades of Cu & Ag, with the added benefits of other critical metals (gallium, germanium, vanadium and REE)

EXCELLENT INFRASTRUCTURE:

Existing railways, highways, 400kVA powerlines and access to fresh water – the project is ideally located



Swan Lake Project - Quick Facts

NEW DISCOVERY IN WELL-ENDOWED AREA:

Swan Lake is a new Cu-Ag-Au system located within an epithermal altered lithocap, with Au-Ag potential & porphyry Cu-Au potential

Granted exploration permits over 218 km²

Project sits along strike and between two of the largest Cu-Au projects in Europe

RESOURCES ALONG STRIKE:

Aitik mine - 2.2Bt @ 0.19% Cu, 0.12g/t Au & 1.0g/t Ag

Laver project - 1.0Bt @ 0.21% Cu, 0.11g/t Au & 3.0g/t Ag

DRILL-READY:

Drill-ready with identified targets for epithermal Au-Ag & porphyry Cu-Au deposits

MINERALISED SAMPLES:

Rock chip samples with up to 0.7% Cu, 0.16g/t Au & 55g/t Ag

PROJECT PORTFOLIO IN BRIEF – NORWAY & FINLAND

Bidjovagge Project - Quick Facts

PEDIGREE COMPARISONS:

Geological parallels between the Bidjovagge area & the Kalgoorlie “Golden Mile” area

RESOURCE ESTIMATE:

Past producing copper-gold mine

Resource of 3.3Mt @ 0.97% Cu & 1.27 g/t Au
(Indicated category)

Potential for high-grade cobalt & tellurium has also been identified. Only recently discovered and not included in the resource estimate

HIGH-GRADE INTERSECTIONS:

18.0m @ 2.21% Cu & 33.8g/t Au

27.3m @ 3.11% Cu & 0.58 g/t Au

15.0m @ 2.0% Cu & 8.55g/t Au

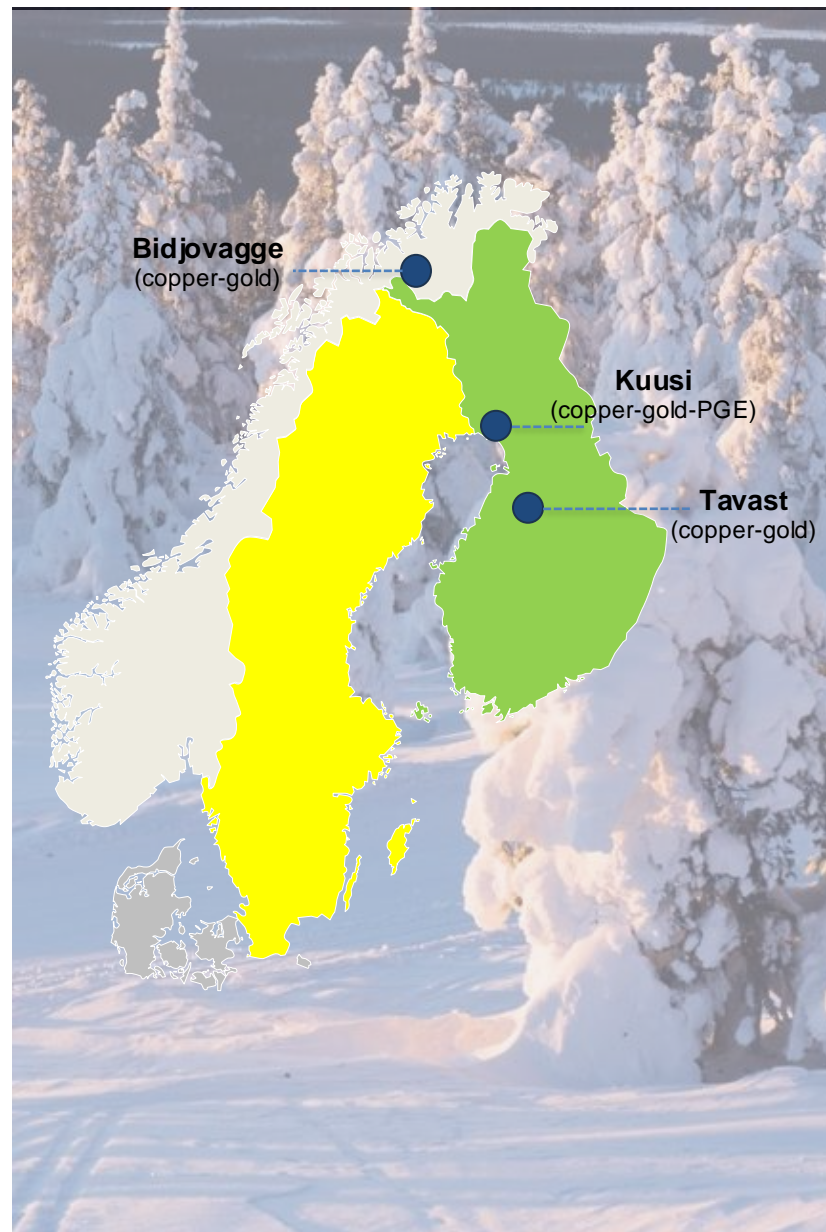
DRILL-READY TARGETS:

Significant resource growth potential

Bonanza grades of gold & high grades of copper in relatively shallow exploration drill holes

Recent analysis of geophysical data indicates continuation of the ore zone in several directions

Multiple drill-ready targets



Kuusi Project - Quick Facts

DRILL READY TARGET:

Kuusi is a drill-ready copper-gold-PGE target analogous to the Kilvenjarvi deposit on the same geological basement structure

Granted exploration permit covering 3km²

STRONG COINCIDENT ANOMALY:

Strong geophysical anomaly coincident with geochemical anomaly

Till geochemical anomaly: Cu up to 153 ppm compared to background level of 79 ppm

Initial drilling program designed

Tavast Project - Quick Facts

LARGE-SCALE DISCOVERY POTENTIAL:

Tavast is a greenfield copper-gold system located in a previously unexplored & sparsely populated region of central Finland

Exploration Reservation covering 444km²

Substantial potential for a large-scale discovery

HIGH-GRADE BOULDER SAMPLES:

Boulders assay up to 4.4% Cu & up to 0.56g/t Au

Boulders' source interpreted as 'local'

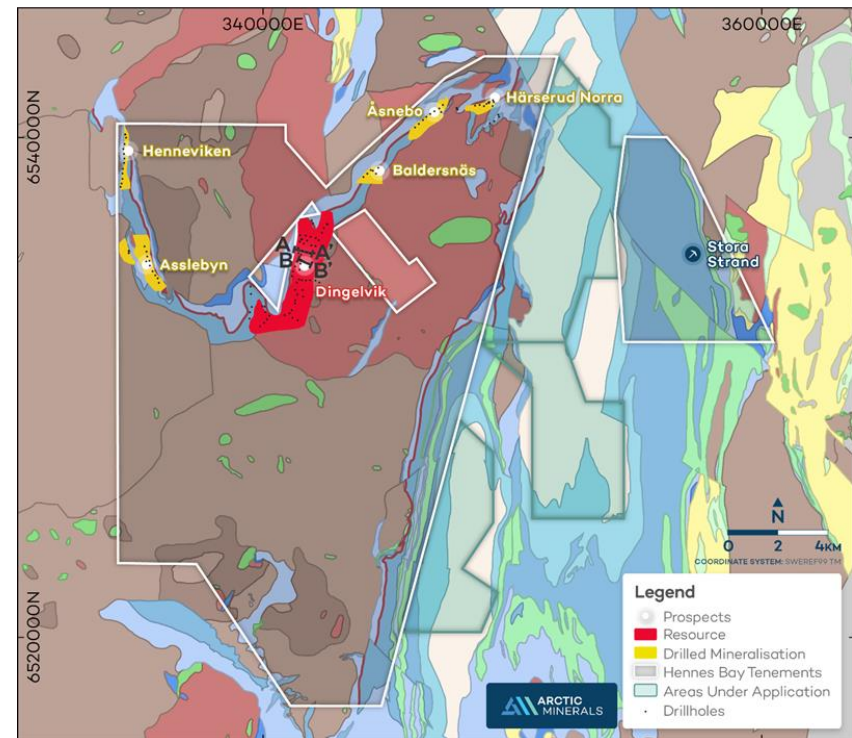
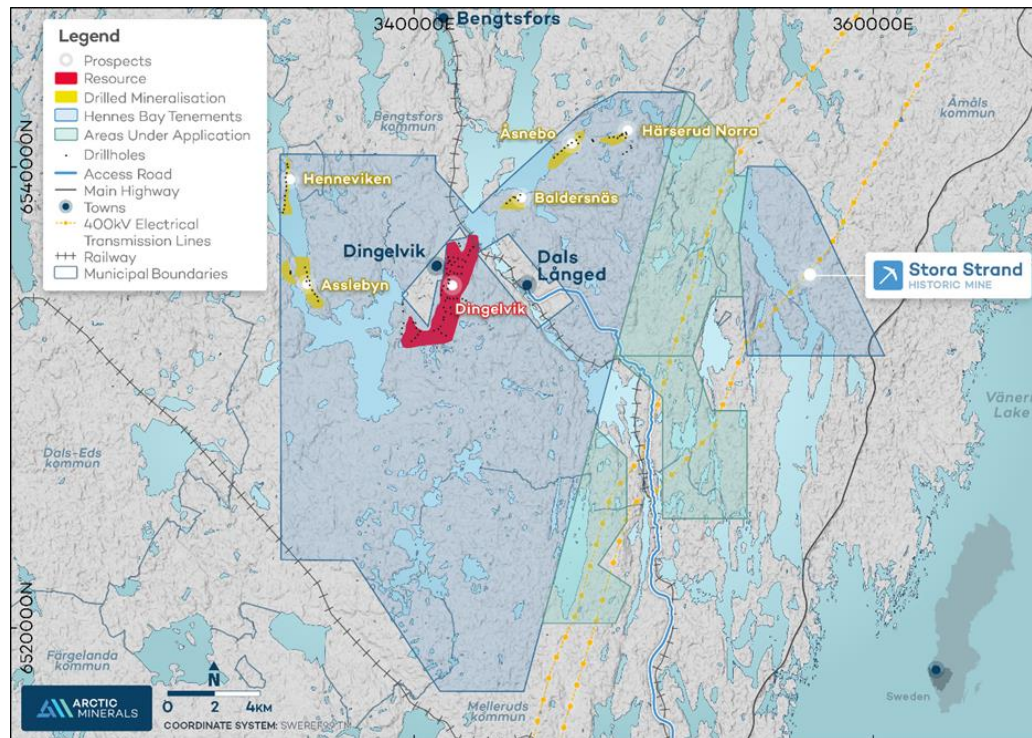
EXPLORATION PLANS:

Program of ground geophysics, trenching and Base-of-Till / Top-of-Bedrock sampling planned

MAIDEN JORC COMPLIANT RESOURCE FOR HENNES BAY

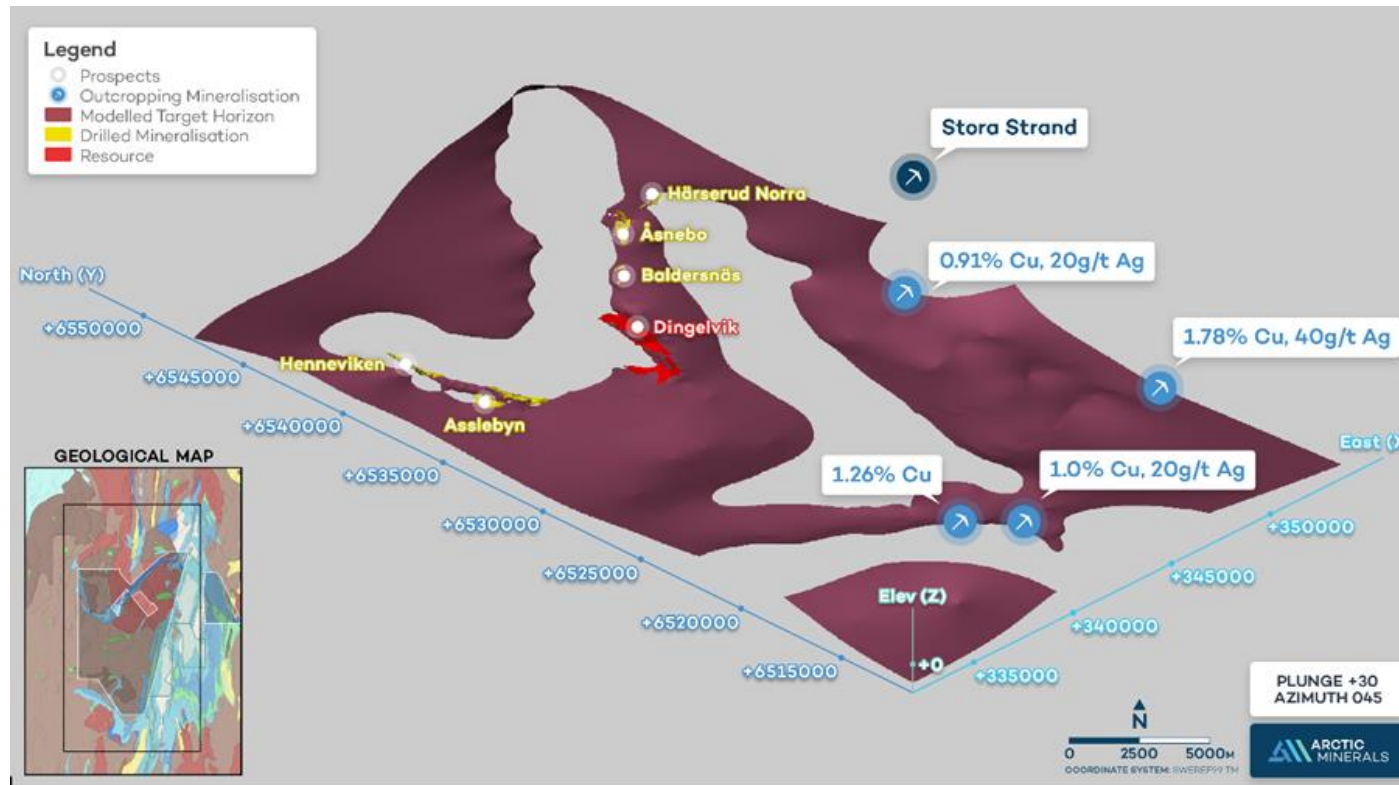
Mineral Resource Estimate (MRE) totals **55.39Mt at 1.0% Copper Equivalent (0.8% Cu & 20.8g/t Ag)**

- Total metal content of **447,000t of copper and 37Moz of silver**
- 100% of MRE classified in the Inferred Mineral Resource category
- MRE reported above a 0.8% CuEq cut-off
- Prepared and reported in accordance with the JORC Code (2012) by an independent Competent Person



IMMENSE RESOURCE GROWTH AND EXPLORATION UPSIDE

- MRE based solely on Dingelvik prospect, **mineralisation remains open in all directions**
- MRE **does not include several other prospects with extensive zones of mineralisation** defined by historical drilling.
- MRE interpreted as distal part of a sediment-hosted stratiform copper mineral system (“SSC”)
- SSC mineral systems favor the formation of **very large deposits and mineral districts**
- Tenement package covers 322km² with a further 80km² under application, **<5% of the aerially extensive target horizon drill tested**
- Surface outcrops of the mineralised contact mapped up to 17 km from MRE



Potential for substantial resource growth and new discoveries through further targeted drilling

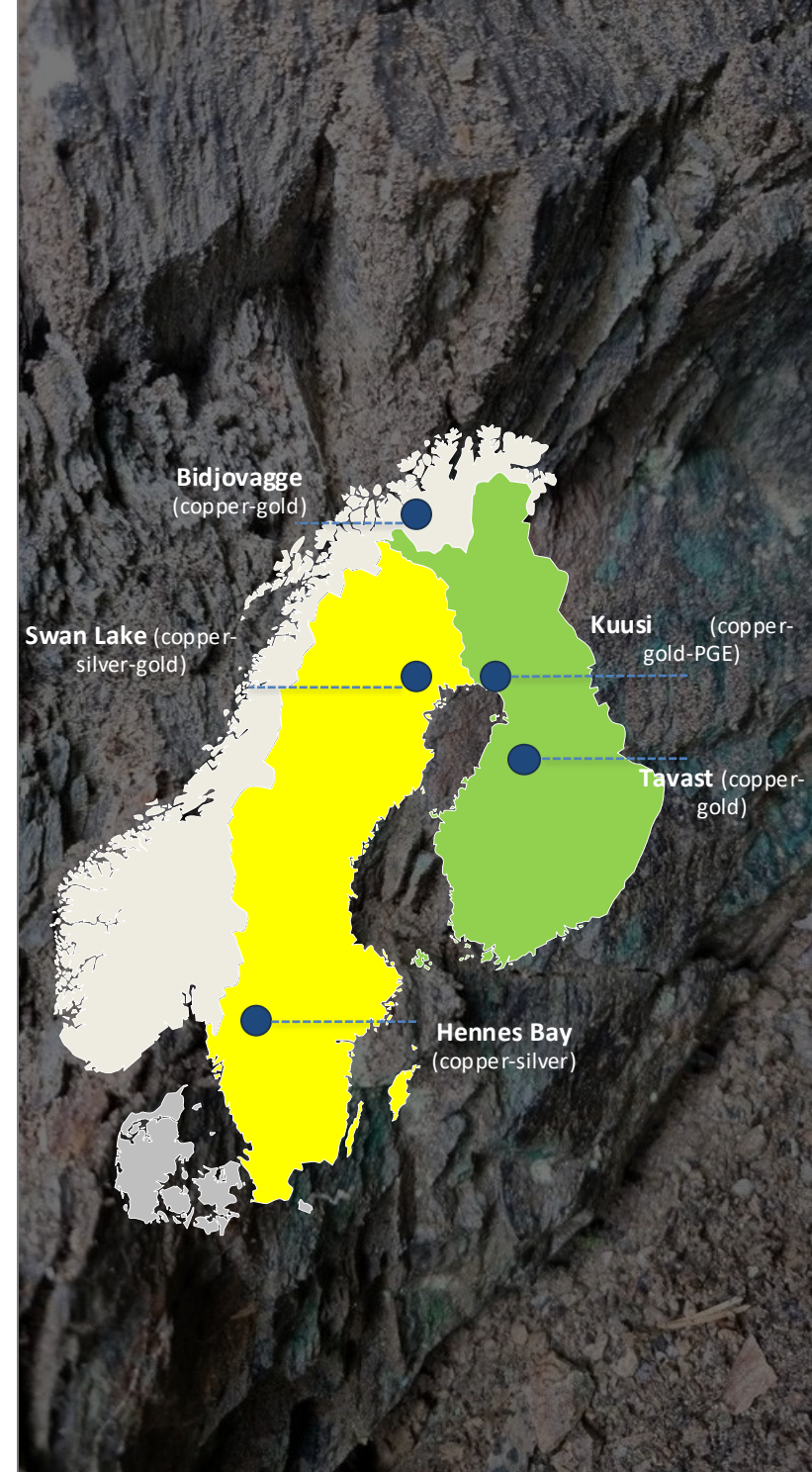
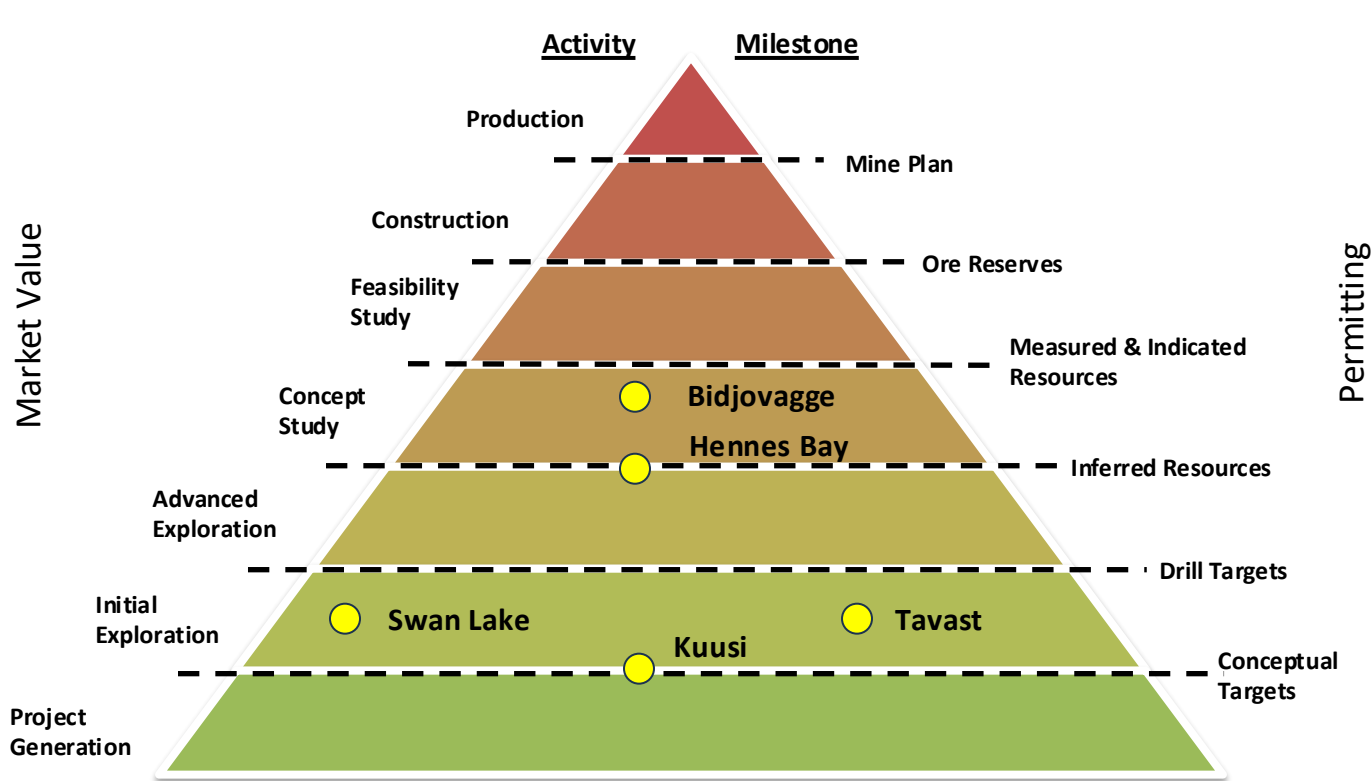
FORWARD WORK PLAN – HENNES BAY

- **Stakeholder Engagement**
- **Environmental, Heritage and Cultural Investigations**
 - Baseline studies covering Environment, Flora, Fauna and Heritage
- **Resource Expansion**
 - Drill testing of the peripheries of Dingelvik prospect
 - Infill and extension drilling at the other five prospects to upgrade and add to MRE
- **Testing of Exploration Model**
 - Additional field mapping
 - Geophysical surveys using modern techniques
 - Regional drilling
- **Project Development**
 - Detailed mine design and scheduling
 - Preliminary metallurgical testing
 - Preliminary Economic Assessment (“PEA”)
 - ✓ Combination of large tonnage, high-grades, and predictable ore-body geometry make SSCs very attractive for large scale mining operations

BALANCED PORTFOLIO

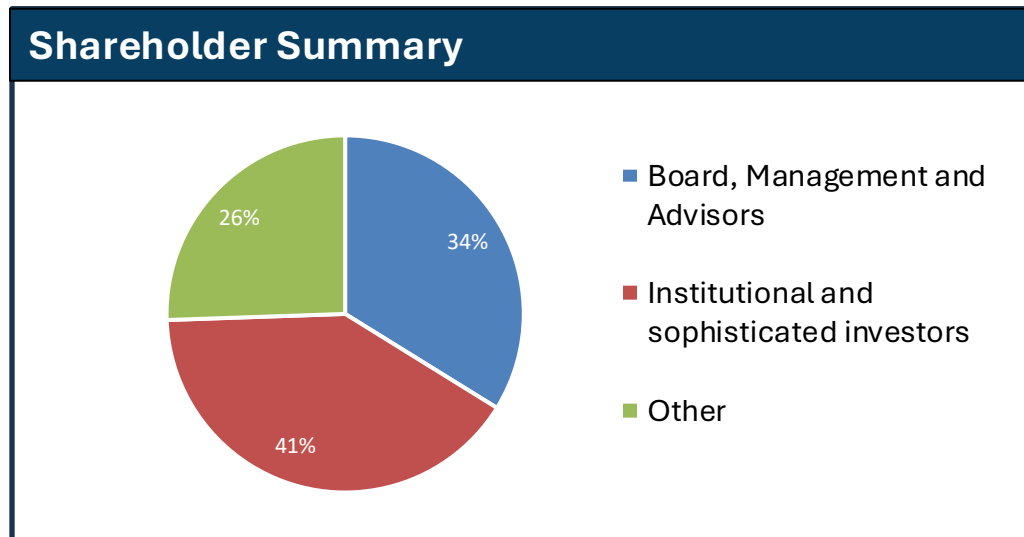
Geared towards drilling success and rapid project advancement

- Flagship project with 447kt contained copper & 37Moz silver (Hennes Bay)
- Second advanced project, with significant copper-gold resource (Bidjovagge)
- Strong pipeline of advanced exploration targets (Swan Lake, Tavast, Kuusi)



CORPORATE SUMMARY

Capital Structure	
Shares on issue	40 M
Share price (as at 28/03/2025)	10.36 SEK
Market Capitalisation	414 MSEK
52 Week Low/High	1.86 – 15.50 SEK
Cash (as at 31/12/2024)	13 MSEK



Board & Management		Advisory Committee	
 PETER WALKER Non-Executive Chairman Over 40 years of international experience in the resources sector, Founder and CEO of Scandinavian Minerals	 KRISTER SÖDERHOLM Vice Chairman Geologist with more than 40 years of experience in mining and exploration in the Nordic region and internationally	 ERIK LUNDSTAM Advisor 30 years of experience in various geological settings, with significant discoveries in Sweden with many years of experience across Boliden and Aicanto Minerals	 LARS-ERIC AARO Advisor Over 35 years in the mining industry with executive roles at major companies like LKAB and Boliden, and an industry advisor in sustainable mining strategies
 PETER GEORGE Executive Director 30 years of experience in the resources sector including technical and managerial roles in Boliden and MD/Executive Director of Aicanto Minerals	 CLAES LEVIN Non-Executive Director Over 40 years of international experience, Jur. kand. and holds an economics degree from Lund University.	 DUNCAN LARGE Advisor Geologist with more than 40 years of experience in mining and exploration globally. Former exploration Manager Eurasian Minerals	 JONAS LINDHOLM Advisor Business Facilitator with over 20 years of experience in creating new. Former Swedish Trade Commissioner responsible for Australian and NZ
 ROBERT BEHETS Non-Executive Director Over 35 years of international experience in the resources sector, instrumental in the growth of Mantra Resources and Papillon Resources	 RISTO PIETILÄ CEO Exploration geophysicist with +30 years of experience in Finland and internationally. Discovery track record, Ind. Silver Swan (Australia), Telkkäälä (Finland)		

INVESTMENT PROPOSITION

Why Invest in Arctic Minerals?

Right Commodities	<ul style="list-style-type: none">▪ Future facing critical raw materials:<ul style="list-style-type: none">➢ Copper➢ Silver, Gallium, Germanium, Vanadium and Rare Earth Elements➢ Gold
Right Geology	<ul style="list-style-type: none">▪ Large scale copper deposit types:<ul style="list-style-type: none">➢ Sediment-hosted copper➢ Porphyry copper-gold
Right People	<ul style="list-style-type: none">▪ Multi-disciplinary team (geology, mining, ESG, commercial, corporate)▪ Extensive Scandinavian experience▪ Track record of discovery and shareholder value creation
Right Jurisdiction	<ul style="list-style-type: none">▪ Tier 1 (Sweden, Norway, Finland)▪ Leading energy transition▪ EU Critical Raw Materials Act
Balanced Portfolio	<ul style="list-style-type: none">▪ Flagship project with 447kt contained copper & 37Moz silver (Hennes Bay)▪ Second advanced project, with significant copper-gold resource (Bidjovagge)▪ Strong pipeline of advanced exploration targets (Swan Lake, Tavast, Kuusi)
Positioned for Scandinavian Markets	<ul style="list-style-type: none">▪ Assets in Sweden, Norway & Finland▪ Swedish & Finnish management▪ Listed in Sweden



APPENDICES

MAIDEN JORC COMPLIANT RESOURCE FOR HENNES BAY

447,000 tonnes of contained Copper and 37Moz of Silver

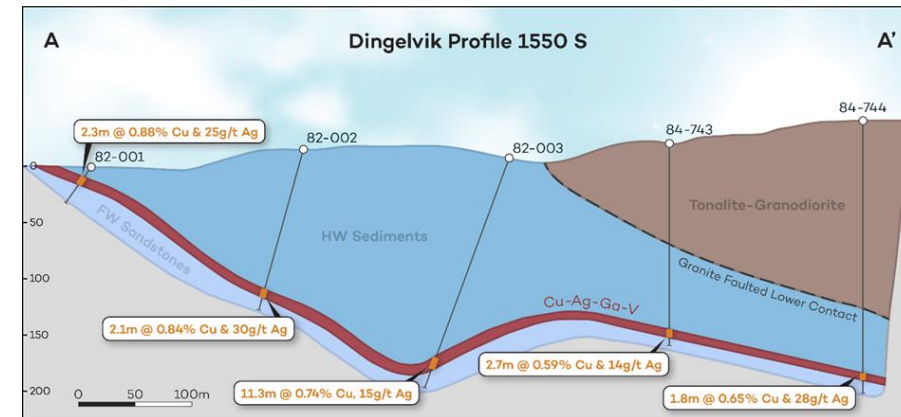
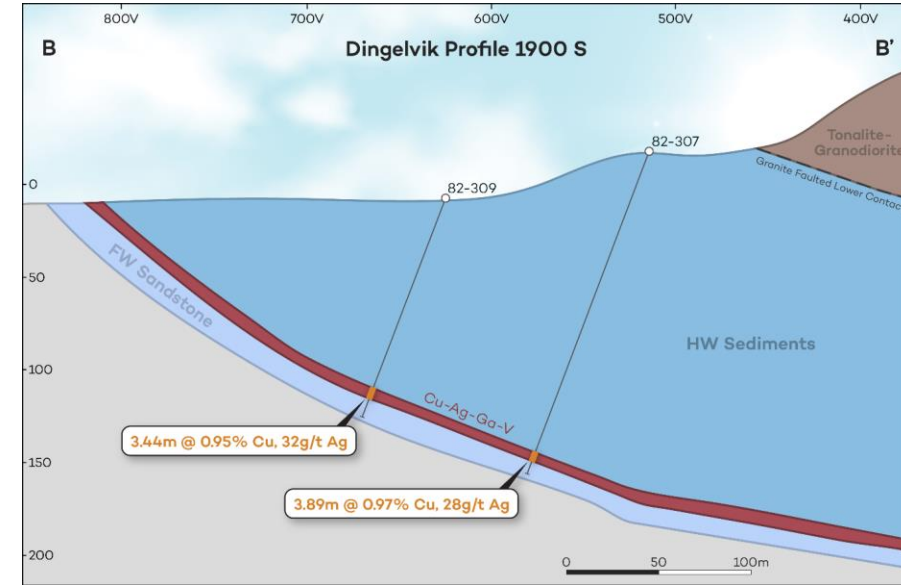
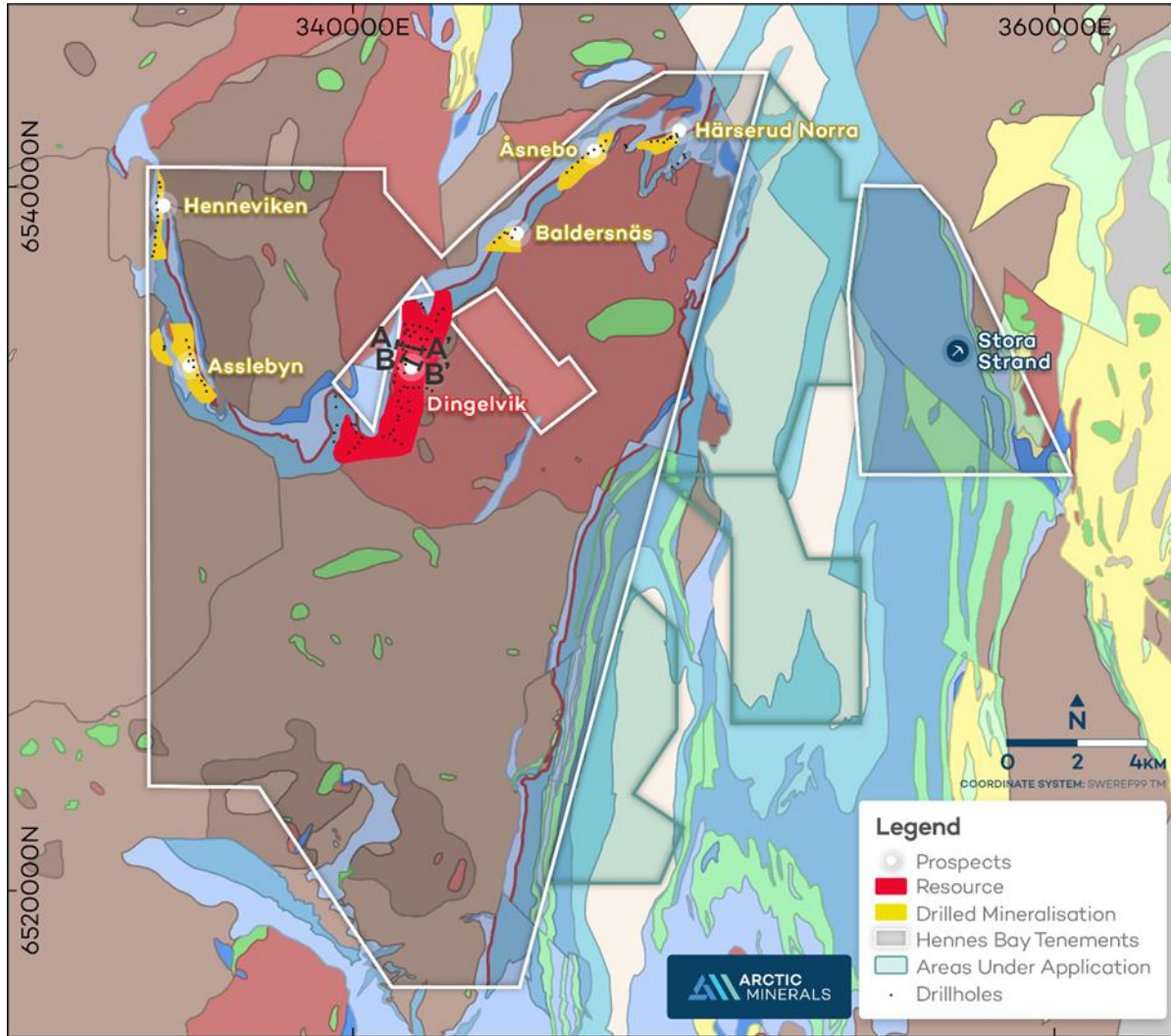
CuEq% COG	MTonnes	CuEq%	Grade (Cu%)	Grade (Ag ppm)	Metal (CuEq kT)	Metal (Cu) kT	Metal (Ag) Moz
>0.6%	55.60	1.0	0.8	20.8	544	448	37.09
>0.8%	55.39	1.0	0.8	20.8	543	447	36.99
>1.0%	35.83	1.0	0.9	22.2	371	305	25.56

Notes:

- *Figures may not add up due to rounding.*
- *Mineral Resources that are not Mineral Reserves have not demonstrated economic viability. The estimate of Mineral Resources may be materially affected by environmental, permitting, legal, title, taxation, socio-political, marketing, or other relevant issues.*
- *No minimum mining SMU parameters applied to the Inferred Mineral Resources.*
- *Bulk density based on mean values assigned for lithological units, including host units for Cu-Ag mineralisation from 692 representative samples.*
- *No mining depletion has been applied as there has been no previous mining activities*
- *No minimum mining SMU parameters have been applied to the Mineral Resources.*
- *Metal Equivalent calculations:*
 - *CuEq (%) = Cu (%) + (Ag (ppm) * Ag/Cu \$factor):*
 - *Where Ag/Cu \$ factor = (Ag\$/Cu\$)/1000*
 - *Ag\$ and Cu\$ converted to USD/gm*
- *Metal Recoveries, (reference provided by REEM - (PRAP 89 508):*
 - *Cu = 90.0%*
 - *Ag = 90.0%*
- *Metal Prices (assigned at 28 February 2025):*
 - *Cu \$/kg = USD 10.0*
 - *Ag \$/oz = USD 32.0*

HENNES BAY GEOLOGY

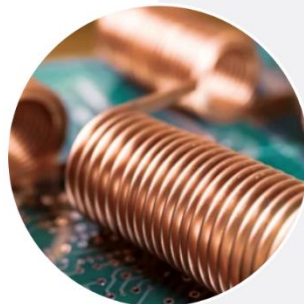
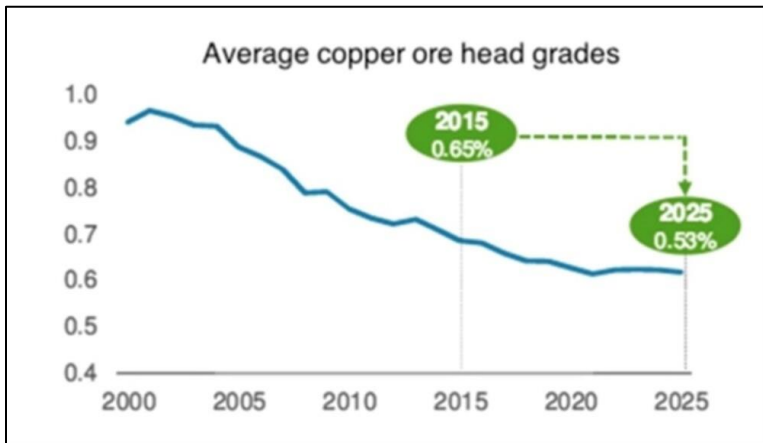
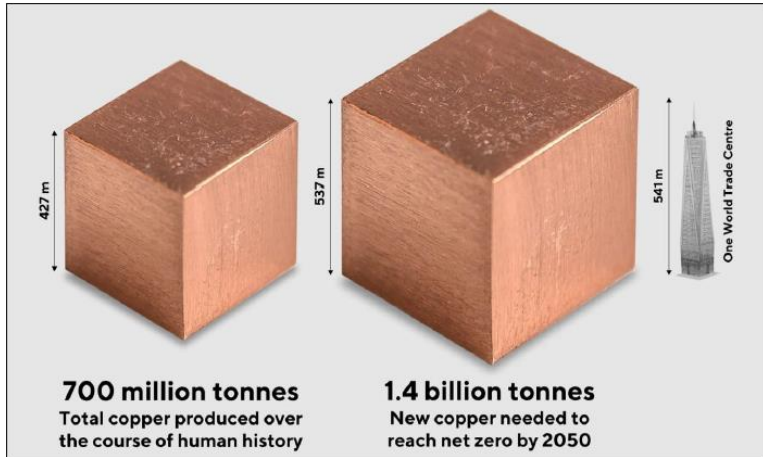
Maiden MRE 447,000 tonnes of contained Copper and 37Moz of Silver



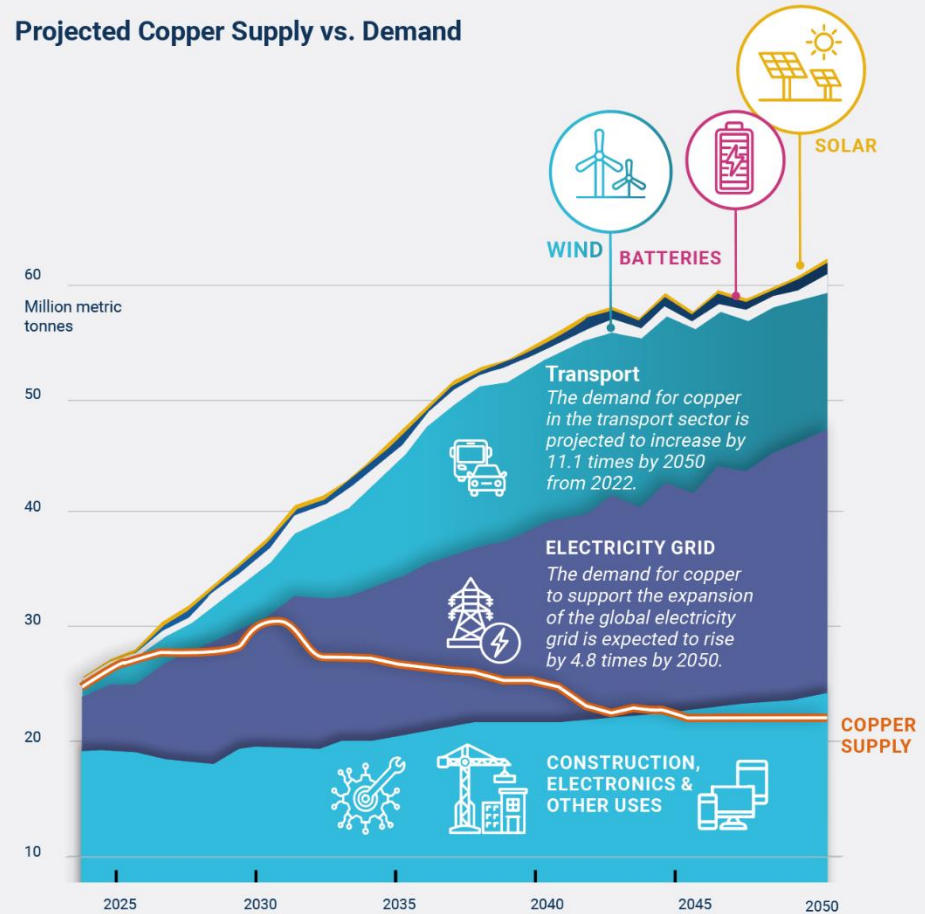
COPPER – THE MACRO LANDSCAPE

300 new major copper mines required by 2050

With drastically falling grades and older mines coming to the end of their lives - 300 new major copper mines, producing nearly twice the amount of copper mined in human history, are required over the next 27 years to achieve net zero by 2050^{1,2,3,4}



Projected Copper Supply vs. Demand



Source: <https://sprottets.com/>

1. Source: <https://energyminute.ca/infographics/the-volume-of-2050-net-zero-copper-demand/>
 2. Source: modified from "The Future of Copper", S&P Global Report, July 2022
 3. Source: <https://www.energycapital.com/copper-investing-2016/>
 4. Source: <https://sprottets.com/>

CRITICAL AND STRATEGIC METALS

The world has changed – Europe is looking to the Nordics to take the lead in critical metal supply

Copper

- Copper is vital to everything that involves the transmission of electricity.
- Copper grades have decreased by 50% over the last 30 years and many are suggesting that Peak Copper will be reached this decade (if not already). Add the Green Transition to this equation, the pressure on the copper supply & price will be immense.
- Europe imports more than 40% of the copper that it uses, security of supply has never been so precarious.
- Arctic Minerals already has resources of over 55Mt of Copper ore at Hennes Bay, with indications at surface that there is a lot more to be uncovered.



Gallium, Germanium, Vanadium & Rare Earth Elements

- Arctic Minerals' geologists have discovered these valuable Critical Metals which could be mined as byproducts to copper at its Hennes Bay project.
- Currently assessing potential options to process these metals in a cost-effective way that could reduce, or even eliminate, the reliance upon external sources to the European market.



Permitting

- Resources industry has suffered for many years from a drawn-out permitting process.
- Governments in the Nordics have recognised this – reviews underway to speed up the permitting process.
- EU CRMA aims to prioritise strategic projects & provide streamlined and predictable permitting procedures.

2030 Benchmarks for EU Strategic Raw Materials





ARCTIC
MINERALS



For further information:

Contact Peter George, Executive Director, peter.george@arcticminerals.se